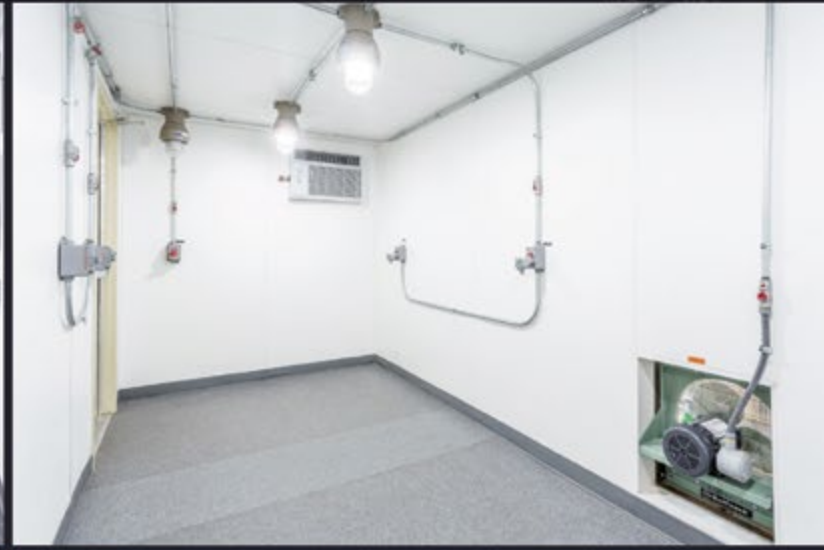


# LINKED EQUIPMENT



**Turnkey Cannabis Extraction Labs Secured Inside  
a Shipping Container - Ready to Deploy Now!**

# MODULAR CANNABIS EXTRACTION LABS

## We Specialize in Engineering and Building Intermodular Steel Building Units (ISBU) for the Cannabis Industry

Designing and building a manufacturing facility is not an easy task, it involves following very intensive fire codes, building permits, and business licensing. Our team of architects, chemical processing, and fire protection engineers make it easy to design a facility that is both compliant and optimized. Every LINKED EQUIPMENT Lab design can come with a Technical Report written by our PE Fire Protection Engineer addressed to your local Fire Department. Work with a team who knows how to get things done right the first time.

Each LINKED EQUIPMENT Extraction Booth comes fully equipped with the following features: intake and exhaust fans, sensors, alarm, explosion proof lighting, explosion proof emergency lighting, explosion proof switches, explosion proof active fan, explosion proof emergency fans, explosion proof A/C, gas detection, emergency shunt system, static free floor, threaded metal conduit, and horns. They also fulfill interlock requirements in National, State and Local codes. All the equipment used in our booths is UL listed.

Each lab is designed Class 1 Division 1, Group D and can be used for both hydrocarbon or ethanol extraction. Spending the few extra dollars on the C1D1 VS C1D2 electrical equipment is worth the extra cost. This will allow much more flexibility for your booth, and leaves room for more strict regulation changes. Our compliant and pre-engineered C1D1 extraction rooms allow us to streamline your building, permitting, and licensing, and this will allow you to become operational as quickly as possible, without making any mistakes.

Our team is actively innovating and working with other extraction equipment companies to supply you with the solutions you need. Please don't be afraid to reach out about a problem you are facing - we are always willing to help.

LINKED EQUIPMENT extraction labs come in a variety of sizes to suit your needs. The 8' x 20' pre-fabricated C1D1 extraction lab is perfect to drop into any situation, indoors or outdoors. The flexibility of having a smaller model is perfect for companies looking to strategically place their extraction room into their facility. This model also allows companies to easily separate their extraction and post-processing rooms. The 8' x 40' model is a step up for some of the larger companies looking to reach larger through puts with more equipment. The extra space of the 8' x 40' model can help you get more done, safer.

Finally, Linked Equipment Labs can connect containers to give you numerous possibilities for your extraction processes. Whether it is 2, 3, or 4 containers connected to give you the space and compliance you need, LINKED EQUIPMENT can design and build it for you!

### Core Benefits of Linked Equipment's Modular Cannabis Extraction Labs:

- ✓ A Cost Effective, Turnkey Extraction Lab Solution
- ✓ Expertly Engineered for the Cannabis Industry
- ✓ Completely Mobile & Portable By Design
- ✓ Fully Customizable to Meet Your Business Needs
- ✓ Buildings Delivered in as Little as 4 Weeks
- ✓ Containers are Stackable and Interconnectable



**Phone:** 602.314.6020 || **Email:** [info@linkedequipment.com](mailto:info@linkedequipment.com)

**Address:** 3454 E Illini Street, Phoenix AZ 85040

**Online:** [www.linkedequipment.com](http://www.linkedequipment.com)